



# SHEETAL

## INDUSTRIES

An ISO 9001:2015 Certified Co.

PERFORMANCE | QUALITY | TRUST





**SHEETAL**  
INDUSTRIES  
An ISO 9001:2015 Certified Co.

## ABOUT US

**SHEETAL INDUSTRIES** is a Leading Manufacturer, Extensive Stockholder of Piping Products for the Oil, Gas, Petrochemical and Nuclear Industries. We are the Manufacturer of Butt-weld Fittings, Forged Fittings, Compression Fittings, Outlets, Flanges & Long Radius Bends in Materials like Stainless Steel, Carbon Steel, Alloy Steel, Duplex & Super Duplex Steel, Nickel Alloys etc.

## WHY US

We are a renowned name in this domain engaged in providing various types of Stainless steel, Carbon Steel & Alloy Steel Products; we have gained immense client's appreciation, Owing to our excellent product quality and transparent dealings.

- Cost-effective rates
- Customized solution
- Customized packaging
- Customer focused approach
- Easy payment modes
- Good Financial Position & TQM
- Superior quality products
- Timely delivery schedule
- Timely delivery of products
- Experience and specialty in work

## WHO WE ARE

### Manufacturer

We are Professional Exporter & Manufacturer of Buttweld Fittings, Socket Weld fittings, Flanges with respective grades, Stainless Steel Pipes, Nickel Alloys Pipes, Titanium Pipes, Inconel Pipes, Hastelloy Pipes, Duplex & Super Duplex Pipes, Alloy 20 and Rods.

### Stockist & Exporters

We are one of the largest stockholder & exporters of Carbon & Alloys Steel Pipes, Fasteners, All Types of Valves, Plates, Sheets, with respective grades. We also exports copper & brass products in shape of Pipes, Tubes, Bars and Plates.

For over years, customers have depended on us for the very best in specialty metals, complete processing services, timely delivery and expert service.

## OUR VISION

To enlarge our product portfolio and production capacities leveraging our domain knowledge, expertise and resources by fostering global partnerships and alliances to become leading global player with dominant market share.

To be the partner of choice for our customers by providing High Quality Steel Pipes, Steel Tubes & industrial Steel pipes for Important sectors Like Oil & Gas with enhancing services tailored to meet their requirements.

To develop bench mark innovations and technologies to suit the changing requirements of the customers & the industry by continuous investments in updating our manufacturing & human resources.

To provide total customer satisfaction through quality products and services at competitive costs.



**SHEETAL**  
INDUSTRIES  
An ISO 9001:2015 Certified Co.



## Pipes & Tubes

**Stainless Steel :** ASTM A312 TP 304 / 304L / 304H / 316 / 316L / 316H / 317 / 317L / 321 / 321H / 310 / 347 / 347H / 904L etc.

**Carbon Steel :** ASTM A53 GR. B / A106 GR. B / API 5L GR. B / API 5L GR. X42 / 46 / 52 / 56 / 60 / 65 / 70 / A333 GR. 3 / GR. 6 etc.

**Alloy Steel :** ASTM A335 GR. P1 / P5 / P9 / P11 / P22 / P91 etc.

**Others :** Duplex, Super Duplex, Inconel, Monel Hastelloy, Nickel, Alloy 20, 254 SMO, Copper, Brass, Bronze, Titanium, Tantalum, Bismuth, Aluminium, High Speed Steel, Zinc, Lead, etc.

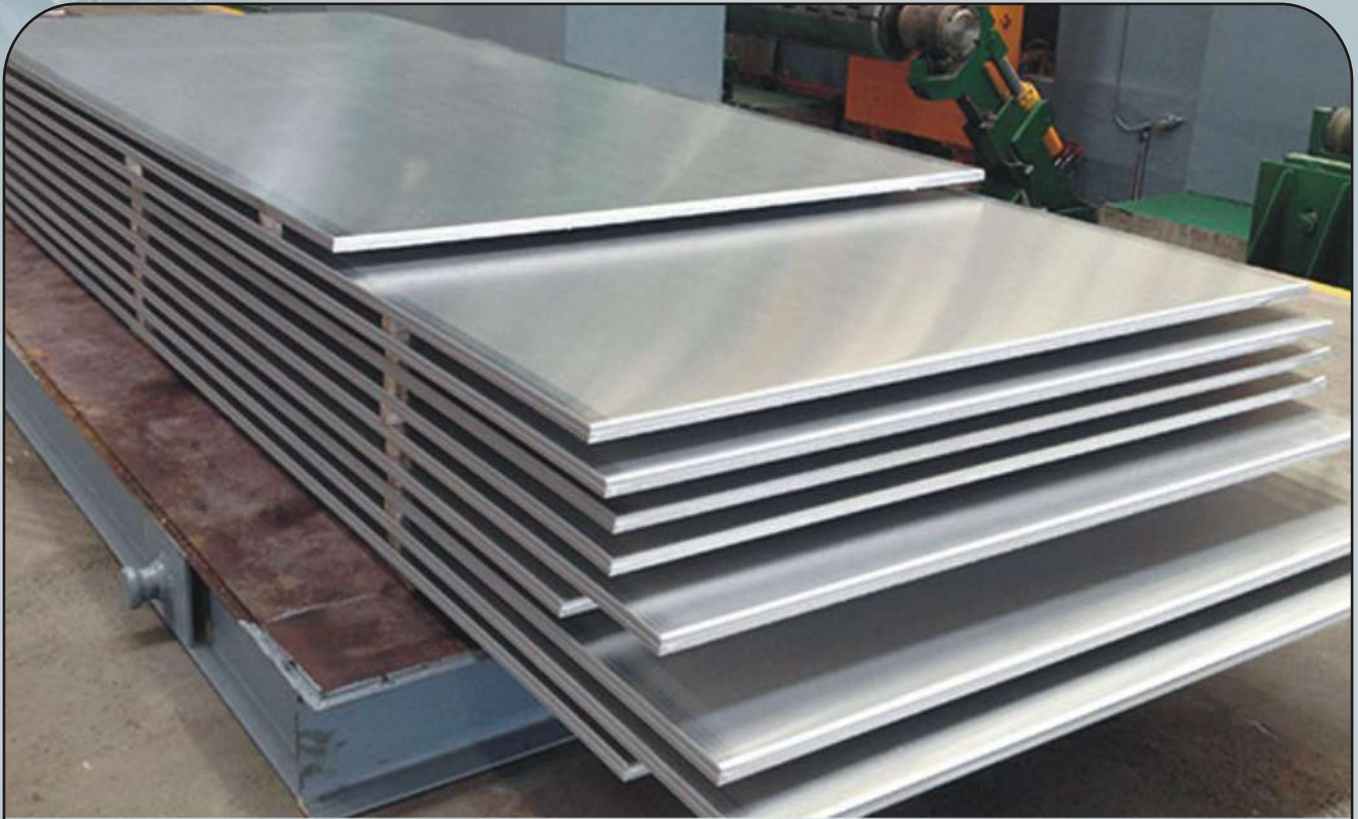
**Types :** Round, Square, Rectangular.

**Size :** Upto 24" NB. (Seamless & Welded)

**Wall Thickness :** Sch. 5S to Sch. XXS



**SHEETAL**  
INDUSTRIES  
An ISO 9001:2015 Certified Co.



## Sheets & Plates

**Stainless Steel Coils, Sheets & Plates** as per ASTM A 240 Gr. TP 304, 304L, 304LN, 309, 309S, 309H, 310S, 310H, 316, 316L, 316H, 316LN, 316TI, 317, 317L, 321, 321H, 347, 347H, 348, 348H, 409, 410, 420, 430 etc.

**Alloy Steel Plates** as per ASTM A 387 Gr. 2, 5, 9, 11, 12 & 22 in class 1 & 2, ASTM A 204, Gr. A & B, DIN 17175 Gr. 15Mo3 & 16Mo3 with IBR Test Certificate.

**Carbon Steel / Boiler Quality Plates** as per IS 2062 Gr. A, B & C, IS 2002 Gr. 1& 2, ASTM A516 Gr. 60 & 70 ASTM A515 Gr. 70.

**High Nickel Alloy** : Monel, Nickel, Inconel, Hastalloy, Copper, Brass, Bronze, Brass, Titanium, Tantalum, Bismuth, Aluminium, High Speed Steel, Zinc, Lead, etc.

**Duplex & Super Duplex Steel** : UNS S31803, UNS S32750, UNS S32760, 904L, Alloy 20

**Types** : Sheet, Plates, Strips, etc.



**SHEETAL**  
INDUSTRIES  
An ISO 9001:2015 Certified Co.



## Butt-Weld Fittings

**Stainless Steel:** ASTM A312 TP 304 / 304L / 304H / 316 / 316L / 316H / 317 / 317L / 321 / 321H / 310 / 347 / 347H / 904L etc.

**Carbon Steel:** ASTM A234 WPB / A420 WPL3 / A420 WPL6 / MSS-SP-75 WPHY 42 / 46 / 52 / 56 / 60 / 65 / 70

**Alloy Steel:** ASTM A234 WP1 / WP5 / WP9 / WP11 / WP22 / WP91 / AISI 4130 / AISI 4140

**Others:** Duplex, Super Duplex, Inconel, Monel Hastelloy, Nickel, Alloy 20, 254 SMO, Copper, Brass, Bronze, Titanium, Tantalum, Bismuth, Aluminium, High Speed Steel, Zinc, Lead, etc.

**Types:** Elbow, Tee, Reducer, Return Bends, Stub-Ends, Cap, Collar, Cross, Insert etc.

**Size:** 1/4" NB TO 32" NB. (Seamless & Welded)

**Wall Thickness:** Sch. 5S To Sch. XXS.



**SHEETAL**  
INDUSTRIES  
An ISO 9001:2015 Certified Co.



## Flanges

**Stainless Steel :** ASTM A312 TP 304 / 304L / 304H / 316 / 316L / 316H / 317 / 317L / 321 / 321H / 310 / 347 / 347H / 904L etc.

**Carbon Steel:** ASTM A105 / A350 LF2, etc.

**Alloy Steel:** ASTM A182 F1 / F5 / F9 / F11 / F22 / F91 / AISI 4130 / AISI 4140

**Others:** Duplex, Super Duplex, Monel, Nickel, Inconel, Hastelloy, Copper, Brass, Bronze, Titanium, Tantalum, Bismuth, Aluminium, High Speed Steel, Zinc, Lead, etc.

**Types:** Weldneck, Slipon, Blind, Socket Weld, Lap Joint, Spectacles, Ring Joint, Oriface, Long Weldneck, Deck Flange, etc.

**Size:** 1/2" NB TO 24" NB.

**Class:** 150#, 300#, 400#, 600#, 900#, 1500# & 2500#.



**SHEETAL**  
INDUSTRIES  
An ISO 9001:2015 Certified Co.



## Forged Fittings

**Stainless Steel :** ASTM A312 TP 304 / 304L / 304H / 316 / 316L / 316H / 317 / 317L / 321 / 321H / 310 / 347 / 347H / 904L etc.

**Carbon Steel :** ASTM A105 / A 350 LF2, etc.

**Alloy Steel:** ASTM A182 F1 / F5 / F9 / F11 / F22 / F91 / AISI 4130 / AISI 4140

**Others:** Duplex, Super Duplex, Inconel, Monel Hastelloy, Nickel, Alloy 20, 254 SMO, Copper, Brass, Bronze, Titanium, Tantalum, Bismuth, Aluminium, High Speed Steel, Zinc, Lead, etc.

**Types:** Elbow, Tee, Union, Cross, Coupling, Cap, Bushing , Plug, Swage Nipple, Welding Boss, Hexagon Nipple, Barrel Nipple, Welding Nipple, Parraler Nipple, Street Elbow, Hexagon Nut, Hose Nipple, Bend, Adapter, Insert, Weldolet, Elbolet, Sockolet, Thredolet, Nipolet, Latrolet, etc.

**Size:** 1/4" NB TO 4" NB. (Socketweld & Threaded)

**Class:** 3000#, 6000#, 9000#.



**SHEETAL**  
INDUSTRIES  
An ISO 9001:2015 Certified Co.

## INTRODUCTION

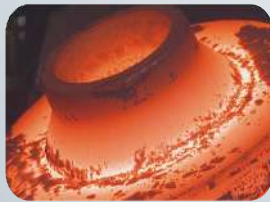
### Manufacturing

#### Butt Weld Pipe Fittings & Flanges

This is to introduce ourselves as the most reliable outstanding partners for manufacturing of buttwelding pipe fittings, socket weld, pipe fittings, flanges & tubular components in all kinds of steel. Our panel of 25 years past experienced manufacturers ensures excellent quality fittings meeting exacting standards of National & International quality.

These Pipe Fitting are manufactured from ferrous metals & non ferrous metals such as Carbon Steel, Alloy Steel, Low Temperature Carbon Steel & Stainless Steel, Hastelloy, Titanium, Inconel, Monel, etc. Both Seamless and E.R.W. Pipe Fittings are produced by our special manufacturing process involving either hot or cold forming. We are fully capable of manufacturing Pipe fittings made to customer's specifications in terms of type, dimensions, material & quantity under any third party inspection.

These Pipe Fittings are perfectly round, rugged, leak proof, corrosion resistant (Where ever required), meeting all the requirements to ASTM/BS/DIN/ISI codes. These quality fittings extend the life of piping systems, facilitate direct pipe welding, permit compact installing a piping network.



#### FACILITIES

- Hydraulic Press
- Oil Fired Furnace with Temp. Recorder
- Universal Testing Machine
- Hardness Tester
- Chemical Laboratory
- Hacksaw Cutting Machines
- Lathe Machines
- Plate Rolling Machines
- Grinding Machines
- Drilling Machines
- Motor Generator Welding Set (Advani)
- AC Welding Sets (Advani)
- DC Rectifier Welding Sets (Advani)
- Computer & Software





**SHEETAL**  
INDUSTRIES  
An ISO 9001:2015 Certified Co.

## Dairy Fittings Products



NRV LIFT TYPE



NRV HORIZONTAL



NRV VERTICAL



SIGHT GLASS FLANGED



SYPHONE COCK



FOOT VALVE



MICRO VALVE



TC Butterfly Valve



NON-RETURN VALVE  
WITH NRV



IC BALL VALVE IMPORTED



CAM LOCK & WHITE STAINER



CAM LOCK COUPLING



FLEXIBLE HOSE WITH FLANGE



BSP FLEXIBLE HOSE



DOUBLE CHECK VALVE QRC



SINGLE CHECK VALVE QRC



STRAIGHT THROUGH QRC



CONDENSET POT



PRESSURE GAUGE SNUBBER



PRESSURE GAUGE



**SHEETAL**  
INDUSTRIES  
An ISO 9001:2015 Certified Co.

**STAINLESS STEEL PIPE DIMENSION -  
KG. PER MTR. (ANSI B36.19)**

Nominal Bore		Outside Diameter	Schedule 5S		Schedule 10S		Schedule 40S		Schedule 80S		Schedule 160S		Schedule XXS	
mm	INCH	mm	Wt mm	Weight (Kg/mt)	Wt mm	Weight (Kg/mt)	Wt mm	Weight (Kg/mt)	Wt mm	Weight (Kg/mt)	Wt mm	Weight (Kg/mt)	Wt mm	Weight (Kg/mt)
3	1/8	10.3	1.24	0.276	1.24	0.28	1.73	0.37	2.41	0.47	-	-	-	-
6	1/4	13.7	1.24	0.390	1.65	0.49	2.24	0.631	3.02	0.80	-	-	-	-
10	3/8	17.1	1.24	0.490	1.65	0.63	2.31	0.845	3.20	1.10	-	-	-	-
15	1/2	21.3	1.65	0.800	2.11	1.00	2.77	1.27	3.75	1.62	4.75	1.94	7.47	2.55
20	3/4	26.7	1.65	1.03	2.11	1.28	2.87	1.68	3.91	2.20	5.54	2.89	7.82	3.63
25	1	33.4	1.65	1.30	2.77	2.09	3.38	2.50	4.55	3.24	6.35	4.24	9.09	5.45
32	1 1/4	42.2	1.65	1.65	2.77	2.70	3.56	3.38	4.85	4.47	6.35	5.61	9.70	7.77
40	1 1/2	48.3	1.65	1.91	2.77	3.11	3.68	4.05	5.08	5.41	7.14	7.25	10.16	9.54
50	2	60.3	1.65	2.40	2.77	3.93	3.91	5.44	5.54	7.48	8.74	11.1	11.07	13.44
65	2 1/2	73.0	2.11	3.69	3.05	5.26	5.16	8.63	7.01	11.4	9.53	14.9	14.2	20.39
80	3	88.9	2.11	4.51	3.05	6.45	5.49	11.30	7.62	15.2	11.1	21.3	15.24	27.65
100	4	114.3	2.11	5.84	3.05	8.36	6.02	16.07	8.56	22.3	13.49	33.54	17.12	41.03
125	5	141.3	2.77	9.47	3.40	11.57	6.55	21.8	9.53	31.97	15.88	49.11	19.05	57.43
150	6	168.3	2.77	11.32	3.40	13.84	7.11	28.3	10.97	42.7	18.2	67.56	21.95	79.22
200	8	219.1	2.77	14.79	3.76	19.96	8.18	42.6	12.07	64.6	23.0	111.2	22.23	107.8
250	10	273.1	3.40	22.63	4.19	27.78	9.27	60.5	15.08	96.0	28.6	172.4	25.40	155.15
300	12	323.9	3.96	31.25	4.57	36.00	9.52	73.88	17.45	132.0	33.32	238.76	25.40	186.97
350	14	355.6	3.96	34.36	4.78	41.3	11.13	94.59	19.05	158.08	35.71	281.70	-	-
400	16	406.4	4.19	41.56	4.78	47.29	12.7	123.30	21.41	203.33	40.46	365.11	-	-
450	18	457.2	4.19	46.80	4.78	53.42	14.27	155.80	23.8	254.36	45.71	466.40	-	-
500	20	508.0	4.78	59.25	5.54	68.71	15.09	183.42	26.19	311.2	49.99	564.68	-	-
600	24	609.6	5.54	82.47	6.35	94.45	17.48	255.41	30.96	442.08	59.54	808.22	-	-

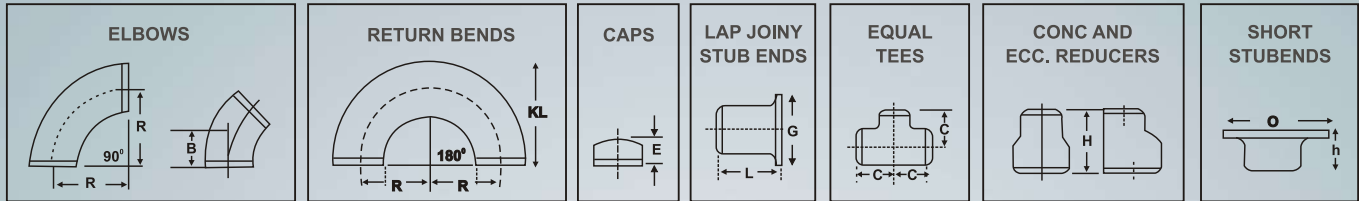
**CARBON STEEL SEAMLESS PIPE DIMENSION & WEIGHT - KG. PER MTR. (ANSI B 36.10)**

Nominal Pipe size		O/D	Schedule 10		Schedule 20		Schedule 30		Schedule STD		Schedule 40		Schedule 60		Schedule Extra Strong (XS)		Schedule 80		Schedule 100		Schedule 120		Schedule 140		Schedule 160		Schedule Double Extra Strong (XXS)		
mm	inch	mm	mm	kg/m	mm	kg/m	mm	kg/m	wall	wt.	wall	wt.	wall	wt.	wall	wt.	wall	wt.	wall	wt.	wall	wt.	wall	wt.	wall	wt.	wall	wt.	
3	1/8	10.3							1.73	0.37	1.73	0.37			2.41	0.47	2.41	0.47											
6	1/4	13.7							2.24	0.63	2.24	0.63			3.02	0.80	3.02	0.80											
10	3/8	17.1							2.31	0.84	2.31	0.84			3.20	1.10	3.20	1.10											
15	1/2	21.3							2.77	1.27	2.77	1.27			3.73	1.62	3.73	1.62								4.78	1.95	7.5	2.55
20	3/4	26.7							2.87	1.69	2.87	1.69			3.91	2.20	3.91	2.20								5.6	2.90	7.82	3.64
25	1	33.4							3.38	2.50	3.38	2.50			4.55	3.24	4.55	3.24								6.35	4.24	9.1	5.45
32	1 1/4	42.2							3.56	3.39	3.56	3.39			4.85	4.47	4.85	4.47								6.35	5.61	9.7	7.77
40	1 1/2	48.3							3.68	4.05	3.68	4.05			5.08	5.41	5.08	5.41								7.14	7.25	10.2	9.56
50	2	60.3							3.91	5.44	3.91	5.44			5.54	7.48	5.54	7.48								8.74	11.11	11.07	13.4
65	2 1/2	73.0							5.16	8.63	5.16	8.63			7.01	11.41	7.01	11.41								9.53	14.92	14.0	20.4
80	3	88.9							5.49	11.3	5.49	11.3			7.62	15.27	7.62	15.3								11.13	21.35	15.24	27.7
90	3 1/2	101.6							5.74	13.57	5.74	13.57			8.08	18.63	8.08	18.63								-	-	16.2	34.1
100	4	114.3							6.02	16.07	6.02	16.07			8.56	22.3	8.56	22.3			11.13	28.32				13.5	33.5	17.12	41.03
125	5	141.3							6.55	21.77	6.55	21.77			9.53	30.9	9.53	30.9			12.7	40.2				15.9	49.11	19.0	57.4
150	6	168.3							7.11	28.26	7.11	28.26			10.97	42.5	10.97	42.5			14.3	54.2				18.3	67.5	21.95	79.22
200	8	219.1			6.35	33.3	7.0	36.8	8.18	42.5	8.18	42.55	10.31	53.10	12.7	64.6	12.7	64.5	15.1	75.92	18.3	90.4	20.6	100.9	23.0	111.27	22.23	108.0	
250	10	273.0			6.35	41.7	7.8	51.3	9.27	60.3	9.27	60.31	12.70	81.50	12.7	81.5	15.1	96.0	18.3	114.7	21.44	133.0	25.4	155	28.6	172.3	25.4	155.0	
300	12	323.9			6.35	49.7	8.4	65.2	9.53	73.8	10.31	79.73	14.30	109.0	12.7	97.4	17.5	132.0	21.4	160.0	25.4	187.0	28.6	208	33.3	238.7	25.4	187.0	
350	14	355.6	6.35	54.6	7.92	67.9	9.53	81.3	9.53	81.3	11.13	94.55	15.10	126.4	12.7	107.4	19.0	158.0	23.8	195.0	27.8	224.0	31.8	253.5	35.7	281.7			
400	16	406.4	6.35	62.6	7.92	77.9	9.53	93.3	9.53	93.3	12.7	123.3	16.70	160.0	12.7	123.3	21.44	203.5	26.2	245.5	30.9	286.6	36.53	333	40.5	365.4			
450	18	457.0	6.35	70.5	7.92	87.7	11.13	122.4	9.53	105.0	14.27	156.0	19.05	206.0	12.7	139.0	23.8	254.6	29.36	309.6	34.9	363.6	39.7	408.3	45.2	459.4			
500	20	508.0	6.35	78.5	9.53	117.2	12.7	155.1	9.53	117.2	15.09	183.4	20.62	248.5	12.7	155.1	26.2	311.2	32.54	381.5	38.1	441.5	44.4	508	50.0	564.8			
550	22	559.0	6.35	86.5	9.53	129.0	12.7	171.0	9.53	129.0			22.20	294.0	12.7	171.0	28.6	373.8	34.9	451.4	41.3	527.0	47.6	600	54.0	672.0			
600	24	610.0	6.35	94.5	9.53	141.0	14.3	209.7	9.53	141.0	17.48	255.4	24.61	355.0	12.7	187.0	30.96	442.08	38.89	547.7	46.0	640.0	52.4	720.15	59.5	808.22			
650	26	660.0	7.92	127.0	12.7	203.0			9.53	153.0					12.7	202.7													
700	28	711.0	7.92	137.4	12.7	218.7	15.88	271.2	9.53	165.0					12.7	218.7													
750	30	762.0	7.92	147.3	12.7	234.6	15.88	292.18	9.53	176.8					12.7	234.7													
800	32	813.0	7.92	157.0	12.7	250.6	15.88	312.0	9.53	188.2	17.48	342.9			12.7	250.6													
850	34	864.0	7.92	167.0	12.7	266.6	15.88	332.1	9.53	200.3	17.48	364.9			12.7	266.6													
900	36	914.4	7.92	176.9	12.7	282.3	15.88	351.7	9.53	212.5	19.05	420.4			12.7	282.2													



**BUTT WELDING FITTING TO ANSI B16.9**

**STAINLESS STEEL ASTM A403 / CARBON STEEL ASTM A234**



NOM BORE	PIPE O.D.	WALL THICKNESS				RADIUS				R					L		H	D	H
		5S	10S	40S	80S	1D	1.5D	2D	3D	A	B	C	E	G	SHORT	LONG			
1/2	21.34	1.65	2.11	2.77	3.73	12.7	19.05	25.4	38.1	12.7	15.9	25.4	25.4	34.9	50.8	76.2	50.8	42	8
3/4	26.67	1.65	2.11	2.87	3.91	19.05	28.57	38.10	57.15	19.05	11.1	28.6	25.4	42.8	50.8	76.2	50.8	52	8
1	33.40	1.65	2.77	3.38	4.55	25.4	38.1	50.8	76.2	25.4	22.2	38.1	38.1	50.8	50.8	101.6	50.8	62	10
1 1/4	42.16	1.65	2.77	3.56	4.85	31.75	47.6	63.5	95.25	31.75	25.0	47.6	38.1	63.5	50.8	101.6	50.8	72	12
1 1/2	48.26	1.65	2.77	3.68	5.08	38.1	57.15	76.2	114.3	38.10	28.6	57.2	38.1	73.0	50.8	101.6	63.5	82	12
2	60.32	1.65	2.77	3.91	5.54	50.8	76.2	101.6	152.4	50.8	34.0	63.5	38.1	92.0	63.5	152.4	76.2	98	16
2 1/2	73.02	2.11	3.05	5.16	7.01	63.5	95.25	127.0	190.5	63.5	44.0	76.2	38.1	104.8	63.5	152.4	88.9	118	16
3	88.90	2.11	3.05	5.49	7.62	76.2	114.30	152.4	228.6	76.2	50.8	86.7	50.8	127.0	63.5	152.4	88.9	130	18
3 1/2	101.60	2.11	3.05	5.74	8.08	88.9	133.35	177.8	266.7	88.9	57.2	95.3	63.5	139.7	76.2	152.4	101.6	140	18
4	114.30	2.11	3.05	6.02	8.56	101.6	152.4	203.2	304.8	101.6	63.5	104.8	63.5	157.2	76.2	152.4	101.6	168	20
5	141.30	2.77	3.40	6.55	9.52	127.0	190.5	254.0	381.0	127.0	82.6	123.8	76.2	185.7	76.2	203.2	127.0	188	25
6	168.27	2.77	3.40	7.11	10.97	152.4	226.6	304.8	457.2	152.4	95.3	142.7	88.9	215.9	88.9	203.2	139.7	215	25
8	219.07	2.77	3.76	8.18	12.7	203.2	304.8	406.4	609.6	203.2	127.0	177.5	101.6	270.0	101.6	203.2	152.4	270	30
10	273.05	3.40	4.19	9.27	12.7	254.0	381.0	508.0	762.0	254.0	158.7	215.9	127.0	324.0	127.0	254.0	177.8	330	35
12	323.85	3.96	4.57	9.52	12.7	304.8	457.2	609.6	914.4	304.8	190.5	254.0	152.4	381.0	152.4	254.0	203.2	400	40
14	355.60	3.96	4.76	9.52	12.7	355.6	533.4	711.2	1066	355.6	222.2	280.0	165.1	412.8	152.4	305.0	330.2	-	-
16	406.40	4.19	4.76	9.52	12.7	406.4	609.6	812.8	1219	406.4	254.0	304.8	177.8	470.0	152.4	305.0	355.6	-	-
18	457.20	4.19	4.76	9.52	12.7	457.2	685.8	914.4	1372	457.2	285.7	343.0	203.2	533.4	152.4	305.0	381.0	-	-
20	508.00	4.76	5.54	9.52	12.7	508.0	762.0	1016	1524	508.0	317.6	381.0	228.6	584.2	152.4	305.0	508.0	-	-
24	609.60	5.54	6.35	9.52	12.7	609.6	914.4	1219	1829	-	381.0	431.8	266.7	698.5	152.4	305.0	508.0	-	-

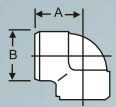
STANDARDS : All dimensions are in mm and confirm to ANSI B 16.9 and MSS. SP-43



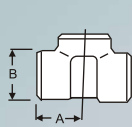
**SHEETAL**  
INDUSTRIES  
An ISO 9001:2015 Certified Co.

**DIMENSION IN MM OF FORGED SCREWED & SOCKET WELD**

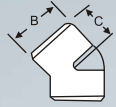
90° ELBOWS



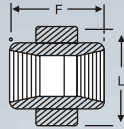
TEE



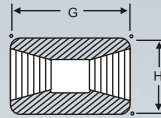
45° ELBOW



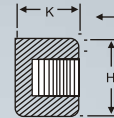
UNION



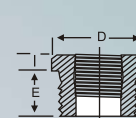
COUPLING



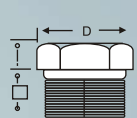
PIPE CAP



BUSHING



HEX HEAD PLUG

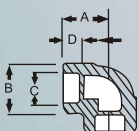


HALF COUPLING = G/2

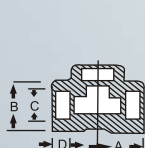
**DIMENSION IN MM OF FORGED SCREWED FITTINGS TO ANSI B-16.11 THREADED TO ASA B 2.1**

NOM BORE	PIPE O.D.	3000 L.B.S.						COMMON FACTORS						6000 L.B.S					
		A	B	C	G	H	K	D	E	F	I	J	L	A	B	C	G	H	K
1/8"	10.3	21	22	17	32	16	19	11	10	40	-	6	-	25	25	19	32	22	-
1/4"	13.7	25	25	19	35	19	25	16	11	43	3	6	32	29	33	22	35	25	27
3/8"	17.2	29	33	22	38	22	25	17.5	13	48	4	8	38	33	38	25	38	32	27
1/2"	21.3	33	38	25	48	29	32	22	15	51	5	8	46	38	46	29	48	38	33
3/4"	26.7	38	46	29	51	35	37	27	16	57	6	10	51	44	56	33	51	44	38
1"	33.4	44	56	33	60	44	41	35	19	64	6	10	60	51	62	35	60	57	43
1 1/4"	42.2	51	62	35	67	57	44	44.5	21	70	7	14	72	60	75	43	67	64	46
1 1/2"	48.3	60	75	43	79	64	44	51	21	79	8	16	80	64	84	44	79	76	48
2"	60.3	64	84	45	86	76	48	63.5	22	88	9	17	94	83	102	52	86	92	51
2 1/2"	73.02	83	102	52	92	92	60	76	27	118	10	21	122	95	121	64	92	108	64
3"	89.0	95	121	64	108	108	65	89	29	121	10	25	140	106	146	79	108	127	68
4"	114.5	114	152	79	121	140	68	117.5	32	150	13	25	180	114	152	79	121	159	75

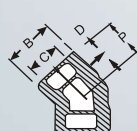
90° ELBOWS



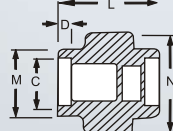
TEE



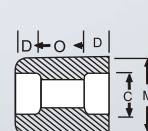
45° ELBOW



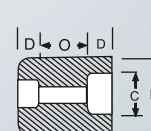
UNION



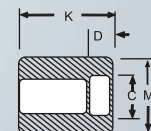
COUPLING



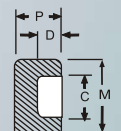
REDUCER



HALF COUPLING



CAP



**SOCKET WELD FITTING TO ANSI B-16.11**

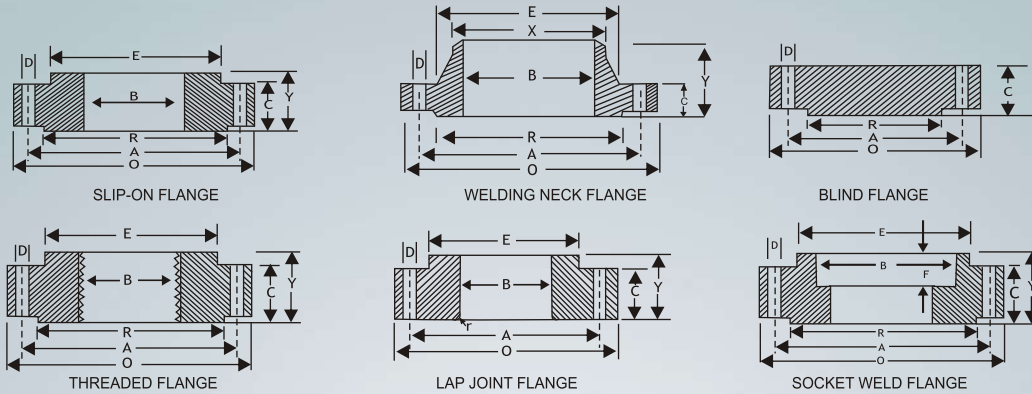
NOM BORE	PIPE O.D.	3000 L.B.S.						COMMON FACTORS						6000 L.B.S					
		A	B	K	J	L	M	N	P	Q	C	D	O	O	A	B	M	K	N
1/8"	10.3	22	18.5	26	16	40	17.3	32	17.5	10	10.7	10	5	8	22	22	20	25	46
1/4"	13.7	22	22	26	18	43	21.2	32	17.5	10	14.1	10	5	8	27	25	24	25	51
3/8"	17.2	25	25	26	19	48	25.4	36	19	10	17.6	10	3	9	27	28	28	26	60
1/2"	21.3	27	32	30	21	51	31	43	22	10	21.7	10	6	13	31	34	34	31	72
3/4"	26.7	34	38	36	24	57	37	50	25	13	27	13	6	13	37	42	41	35	80
1"	33.4	37	46	40	25	64	45.2	60	27	13	33.8	13	9	17	42	50	50	40	94
1 1/4"	42.2	42	56	40	29	70	55	70	30	13	42.6	13	9	17	47	59	58	41	100
1 1/2"	48.3	47	62	40	30	79	61.4	78	32	13	48.7	13	9	17	53	67	66	43	122
2"	60.3	56	75	52	37	89	75	95	38	13	61.2	16	15	23	59	84	83	55	
2 1/2"	73.02	60	92	52	48	114	91.3	125	38	16	73.8	16	14	24		102		56	
3"	89.00	76	110	52	51	127	108.8	140	44	16	89.8	16	14	24		121		58	
4"	114.50	88	137	58		150	136.9		48	19	115.5	19	14	24		152		64	

DIMENSIONS AND OTHERS SPECIFICATIONS AS PER CUSTOMERS REQUIREMENTS ARE AVAILABLE ON REQUEST



**SHEETAL**  
INDUSTRIES  
An ISO 9001:2015 Certified Co.

**FLANGES CLASS 150 & 300**



**DIMENSIONS OF CLASS150 FLANGES AS PER B16.5**

Nominal Pipe Size	Flange Dia O	Dia of Bolt Circle A	No. Of Bolt Holes D	No. Of Holes	Thk of Flange C	Dia of Hub E	Length through Hub			Dia Bore		Dia of R/F R	Depth of Socket F	Pipe Dia X
							S / O & S / W Y	W/N Y	L/J Y	S/O & S/W B	L/J B			
15	88.9	60.3	15.9	4	11.1	30.2	15.9	47.6	15.9	22.3	22.9	34.9	9.5	21.33
20	98.4	69.8	15.9	4	12.7	38.1	15.9	52.4	15.9	27.7	28.2	42.9	11.1	26.67
25	107.9	79.4	15.9	4	14.3	49.2	17.5	55.6	17.5	34.5	35.0	50.8	12.7	33.40
32	117.5	88.9	15.9	4	15.9	58.7	20.6	57.1	20.6	43.2	43.7	63.5	14.3	42.16
40	127.0	98.4	15.9	4	17.5	65.1	22.2	61.9	22.2	49.5	50.0	73.0	15.9	48.26
50	152.4	120.6	19.0	4	19.0	77.8	25.4	63.5	25.4	62.0	62.5	92.1	17.5	60.31
65	177.8	139.7	19.0	4	22.2	90.5	28.6	69.8	28.6	74.7	75.4	104.8	19.0	73.02
80	190.5	152.4	19.0	4	23.8	107.9	30.2	69.8	30.2	90.7	91.4	127.0	20.6	88.90
100	228.6	190.5	19.0	8	23.8	134.9	33.3	76.2	33.3	116.1	116.8	157.2	23.8	114.30
125	254.0	215.9	22.2	8	23.8	163.5	36.5	88.9	36.5	143.8	144.5	185.7	23.8	141.30
150	279.4	241.3	22.2	8	25.4	192.1	39.7	88.9	39.7	170.7	171.4	215.9	27.0	168.27
200	342.9	298.4	22.2	8	28.6	246.1	44.4	101.6	44.4	221.5	222.2	269.9	31.7	219.07
250	406.4	361.9	25.4	12	30.2	304.8	49.2	101.6	49.2	276.3	277.4	323.8	33.3	273.05
300	482.6	431.8	25.4	12	31.8	365.1	55.6	114.3	55.6	327.1	328.2	381.0	39.7	323.85
350	533.4	476.2	28.6	12	34.9	400.0	57.1	127.0	79.4	359.1	360.2	412.7	41.3	355.60
400	596.9	539.7	28.6	16	36.5	457.2	63.5	127.0	87.3	410.5	411.2	469.9	44.4	406.40
450	635.0	577.8	31.7	16	39.7	504.8	68.3	139.7	96.8	461.8	462.3	533.4	49.2	457.20
500	698.5	635.0	31.7	20	42.9	558.8	73.0	144.5	103.2	513.1	514.3	584.2	54.0	508.00
600	812.8	749.3	34.9	20	47.6	663.6	82.5	152.4	111.1	615.9	615.9	692.1	63.5	609.60

**DIMENSIONS OF CLASS 300 FLANGES AS PER B16.5**

Nominal Pipe Size	Flange Dia O	Dia of Bolt Circle A	No. Of Bolt Holes D	No. Of Holes	Thk of Flange C	Dia of Hub E	Length through Hub			Dia Bore		Dia of R/F R	Depth of Socket F	Pipe Dia X
							S / O & S / W Y	W/N Y	L/J Y	S/O & S/W B	L/J B			
15	95.2	66.7	15.9	4	14.3	38.1	22.2	52.4	22.2	22.3	22.9	34.9	9.5	21.33
20	117.5	82.5	19.0	4	15.9	47.6	25.4	57.1	25.4	27.7	28.2	42.9	11.1	26.67
25	123.8	88.9	19.0	4	17.5	54.0	27.0	61.9	27.0	34.5	35.0	50.8	12.7	33.40
32	133.3	98.4	19.0	4	19.0	63.5	27.0	65.1	27.0	43.2	43.7	63.5	14.3	42.16
40	155.6	114.3	22.2	4	20.6	69.8	30.2	68.3	30.2	49.5	50.0	73.0	15.9	48.26
50	165.1	127.0	19.0	8	22.2	84.1	33.3	69.8	33.3	62.0	62.5	92.1	17.5	60.31
65	190.5	149.2	22.2	8	25.4	100.0	38.1	76.2	38.1	74.7	75.4	104.8	19.0	73.02
80	209.5	168.3	22.2	8	28.6	117.5	42.9	79.4	42.9	90.7	91.4	127.0	20.6	88.90
100	254.0	200.0	22.2	8	31.8	146.0	47.6	85.7	47.6	116.1	116.8	157.2	23.8	114.30
125	279.4	234.9	22.2	8	34.9	177.8	50.8	98.4	50.8	143.8	144.5	185.7	-	141.30
150	317.5	269.9	22.2	12	36.5	206.4	52.4	98.4	52.4	170.7	171.4	215.9	-	168.27
200	381.0	330.2	25.4	12	41.3	260.3	61.9	111.1	61.9	221.5	222.2	269.9	-	219.07
250	444.5	387.3	28.6	16	47.6	320.7	66.7	117.5	95.2	276.3	277.4	323.8	-	273.05
300	520.7	450.8	31.7	16	50.8	374.6	73.0	130.2	101.6	327.1	328.2	381.0	-	323.85
350	584.2	514.3	31.7	20	54.0	425.4	71.2	142.9	111.1	359.1	360.2	412.7	-	355.60
400	647.7	571.5	34.9	20	57.2	482.6	82.5	146.0	120.6	410.5	411.2	469.9	-	406.40
450	711.2	628.5	34.9	24	60.3	533.4	88.9	158.7	130.2	461.8	462.3	533.4	-	457.20
500	774.7	685.8	34.9	24	63.5	587.4	95.2	161.9	139.7	513.1	514.3	584.2	-	508.00
600	914.4	812.8	41.3	24	69.8	701.7	106.4	168.3	152.4	615.9	615.9	692.1	-	609.60

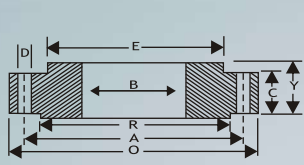
Metric values are direct conversion from Inches table of B16.5

Flanges except Lap Joint will be furnished with (1.6 mm) raised face, Which is included in " Thickness " ( C ) and Length Through Hub ( Y ).

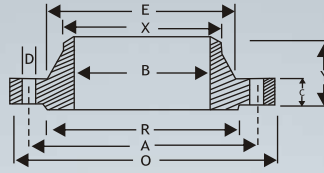


**SHEETAL**  
INDUSTRIES  
An ISO 9001:2015 Certified Co.

**FLANGES CLASS 600 & 900**



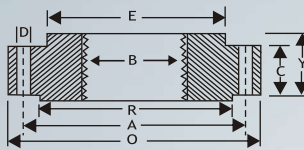
SLIP-ON FLANGE



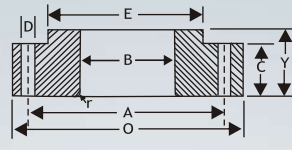
WELDING NECK FLANGE



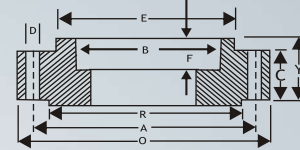
BLIND FLANGE



THREADED FLANGE



LAP JOINT FLANGE



SOCKET WELD FLANGE

**DIMENSIONS OF CLASS 600 FLANGES AS PER B 16.5**

Nominal Pipe Size	Flange Dia O	Dia of Bolt Circle A	No. of Bolt Holes D	No. of Holes	Thk of Flange C	Dia of Hub E	Length through Hub			Dia Bore		Dia of R/F R	Depth of Socket F	Pipe Dia X
							S/O & S/W	W/N	L/J	S/O & S/W	L/J			
							Y	Y	Y	B	B			
15	95.2	66.7	15.9	4	14.3	38.1	22.2	52.4	22.3	22.3	22.8	34.9	9.5	21.33
20	117.5	82.5	19.0	4	15.9	47.6	25.4	57.1	25.4	27.7	28.1	42.9	11.1	26.67
25	123.8	88.9	19.0	4	17.5	54.0	27.0	61.9	26.9	34.5	35.0	50.8	12.7	33.40
32	133.3	98.4	19.0	4	20.6	63.5	28.6	66.7	28.4	43.2	43.6	63.5	14.2	42.16
40	155.6	114.3	22.2	4	22.2	69.8	31.7	69.8	31.7	49.5	50.0	73.0	15.8	48.26
50	165.1	127.0	19.0	8	25.4	84.1	36.5	73.0	36.5	62.0	62.4	92.1	17.4	60.31
65	190.5	149.2	22.2	8	28.6	100.0	41.3	79.4	41.1	74.7	75.4	104.8	19.0	73.02
80	209.5	168.3	22.2	8	31.8	117.5	46.0	82.5	45.9	90.7	91.4	127.0	-	88.90
100	273.0	215.9	25.4	8	38.1	152.4	54.0	101.6	53.8	116.1	116.8	157.2	-	114.30
125	330.2	266.7	28.6	8	44.4	188.9	60.3	114.3	60.4	143.8	141.5	185.7	-	141.30
150	355.6	292.1	28.6	12	47.6	222.2	66.7	117.5	66.5	170.7	171.4	215.9	-	168.27
200	419.1	349.2	31.7	12	55.6	273.0	76.2	133.3	76.2	221.5	222.2	269.9	-	219.07
250	508.0	431.8	34.9	16	63.5	342.9	85.7	152.4	111.2	276.3	277.3	323.8	-	273.05
300	558.8	488.9	34.9	20	66.7	400.0	92.1	155.6	117.3	327.1	328.1	381.0	-	323.85
350	603.2	527.0	38.1	20	69.9	431.8	93.7	165.1	127.0	359.1	360.1	412.7	-	355.60
400	685.8	603.2	41.3	20	76.2	495.3	106.4	177.8	139.7	410.5	411.2	469.9	-	406.40
450	742.9	654.0	44.4	20	82.6	546.1	117.5	184.1	152.4	461.8	462.2	533.4	-	457.20
500	812.8	723.9	44.4	24	88.9	609.6	127.0	190.5	165.1	513.1	514.3	584.2	-	508.00
600	939.8	838.2	50.8	24	101.6	717.5	139.7	203.2	184.1	615.9	615.9	692.1	-	609.60

**DIMENSIONS OF CLASS 900 FLANGES AS PER B 16.5**

Nominal Pipe Size	Flange Dia O	Dia of Bolt Circle A	Dia of Bolt Holes D	No. of Holes	Thk of Flange C	Dia of Hub E	Length through Hub			Dia Bore		Dia of R/F R	Depth of Socket F	Pipe Dia X
							S/O & S/W	W/N	L/J	S/O & S/W	L/J			
							Y	Y	Y	B	B			
15	120.6	82.5	22.2	4	22.2	38.1	31.7	60.3	31.7	22.3	22.8	34.9	9.5	21.33
20	130.2	88.9	22.2	4	25.4	44.4	34.9	69.8	35.0	27.7	28.1	42.9	11.1	26.67
25	149.2	101.6	25.4	4	28.6	52.4	41.3	73.0	41.1	34.5	35.0	50.8	12.7	33.40
32	158.7	111.1	25.4	4	28.6	63.5	41.3	73.0	41.1	43.2	43.6	63.5	14.2	42.16
40	177.8	123.8	28.6	4	31.8	69.8	44.4	82.5	44.4	49.5	50.0	73.0	15.8	48.26
50	215.9	165.1	25.4	8	38.1	104.8	57.1	101.6	57.1	62.0	62.4	92.1	17.4	60.31
65	244.5	190.5	28.6	8	41.3	123.8	63.5	104.8	63.5	74.7	75.4	104.8	19.0	73.02
80	241.3	190.5	25.4	8	38.1	127.0	53.9	101.6	53.8	90.7	91.4	127.0	-	88.90
100	292.1	234.9	31.7	8	44.4	158.7	69.8	114.3	69.8	116.0	116.8	157.1	-	114.30
125	349.2	279.4	35.0	8	50.8	190.5	79.3	127.0	79.2	143.7	141.5	185.7	-	141.30
150	381.0	317.5	31.7	12	55.6	234.9	85.8	139.7	85.8	170.6	171.4	215.9	-	168.27
200	469.9	393.7	38.1	12	63.5	298.4	101.6	162.0	114.3	221.4	222.2	269.8	-	219.07
250	546.1	469.9	38.1	16	69.8	368.3	107.9	184.1	127.0	276.3	277.3	323.8	-	273.05
300	609.6	533.4	38.1	20	79.3	419.1	117.4	200.0	142.7	327.1	328.1	381.0	-	323.85

Metric values are direct conversion from Inches table of B16.5  
RF Thickness 6.3 mm Extra to be provided (Except Lap Joint Flange & FF Flanges).



**SHEETAL**  
INDUSTRIES  
An ISO 9001:2015 Certified Co.

**APPLICATION INDUSTRIES**

**Oil & Gas** **Pharmaceuticals**

**Cement Plants** **Sugar Industries** **Textile**

**Power Plants**

**Machineries**

**Engineering**

**Paper & Pulp Industries**

**Automobile**

**Petroleum Refineries**



**FORMULA OF WEIGHT CALCULATION**

<p><b>1) WEIGHT OF STAINLESS STEEL PIPES</b> O.D. (mm) - W.T. (mm) x W.T. (mm) x 0.0248 = Kg. per Mtr. O.D. (mm) - W.T. (mm) x W.T. (mm) x 0.00756 = Wt. Per Feet.</p>	<p><b>8) WEIGHT OF BRASS PIPE / COPPER PIPE</b> O.D. (mm) - Thick (mm) x Thick (mm) x 0.0260 = Wt. Per Mtr.</p>
<p><b>2) WEIGHT OF STAINLESS STEEL ROUND BAR</b> DIA (mm) x DIA (mm) x 0.00623 = Wt. Per Mtr. DIA (mm) x DIA (mm) x 0.00623 = Wt. Per Feet.</p>	<p><b>9) WEIGHT OF LEAD PIPE</b> O.D. (mm) - Wt. (mm) x Wt. (mm) x 0.0345 = Wt. Per Mtr.</p>
<p><b>3) WEIGHT OF STAINLESS STEEL SQUARE BAR</b> DIA (mm) x DIA (mm) x 0.00788 = Wt. Per Mtr. DIA (mm) x DIA (mm) x 0.0024 = Wt. Per Feet.</p>	<p><b>10) WEIGHT OF ALUMINUM PIPE</b> Length (Mtr.) x Width (Mtr.) x Thick (mm) x 0.0083 = Wt. Per Mtr.</p>
<p><b>4) WEIGHT OF STAINLESS STEEL SQUARE BAR</b> A/F (mm) x A/F (mm) x 0.00680 = Wt. Per Mtr. A/F (mm) x A/F (mm) x 0.002072 = Wt. Per Feet.</p>	<p><b>11) WEIGHT OF ALUMINUM SHEET</b> Length (Mtr.) x Width (Mtr.) x Thick (mm) x 2.69 = Wt. Per PC</p>
<p><b>5) WEIGHT OF STAINLESS STEEL FLAT BAR</b> Width (mm) x Thick (mm) x 0.00798 = Wt. Per Mtr. Width (mm) x Thick (mm) x 0.00243 = Wt. Per Feet.</p>	<p><b>12) WEIGHT OF CONVERSION OF MTR. TO FEET</b> Weight of 1 Mtr. ÷ 3.2808 = Feet</p>
<p><b>6) WEIGHT OF STAINLESS STEEL SHEETS &amp; PLATES</b> Length (Mtrs) X Width (Mtrs) X Thick (mm) X 8 = Kg. Per Sheet Length (Ft) X Width (Ft) X Thick (mm) X 3/4 = Kg. Per Sheet</p>	<p><b>13) WEIGHT OF CALCULATING WIDTH OF SHEET FOR MAKING PIPE</b> Outer DIA - Wall Thickness x 22/7 Width of Sheet</p>
<p><b>7) WEIGHT OF STAINLESS STEEL CIRCLE</b> DIA (mm) x DIA (mm) x Thick (mm) ÷ 160 = Gms. Per PC DIA (mm) x DIA (mm) x Thick (mm) x 0.0000063 = Kg. Per PC</p>	<p><b>14) FORMULA FOR HEALTHY BUSINESS</b> Honesty + Quality of Goods + Quick Service + Reasonable Rate = <b>Good Health of Business</b></p>

## PACKING & DISPATCH



## Third Party Inspection



Larsen & Toubro Ltd.



Nuclear Power Corp.  
of India Ltd.



Approved



Dept. of Atomic Energy



Electromech Engg.



DET NORSKE VERITAS



TATA Project



BUREAU  
VERITAS



# SHEETAL

## INDUSTRIES

An ISO 9001:2015 Certified Co.

**Manufacturers & Merchant Exporters of :** Stainless Steel, Carbon Steel, Alloy Steel, Carbon Steel, Copper & Copper Alloys in shape of Pipes, Pipe Fittings, Flanges, Sheets, Plates, Round Bars, Fasteners etc.

**Manufacturing of : Flanges & Stockists of :** Ferrous & Non Ferrous

103, Mohamadi Mansion, 1st Floor, 36/38, Islampura Cross Lane, Near Alankar Cinema, Mumbai - 400 004.

Tel.: +91 22 6638 1303 / 1304 Telefax : +91 22 6633 6662

**Factory Address : Plot No. 1197, Road No 13., Kalamboli Steel Market.**

Email: [sheetalindustrie@yahoo.in](mailto:sheetalindustrie@yahoo.in) / [salesheetalind@gmail.com](mailto:salesheetalind@gmail.com)

Web.: [www.sheetalindustries.com](http://www.sheetalindustries.com)